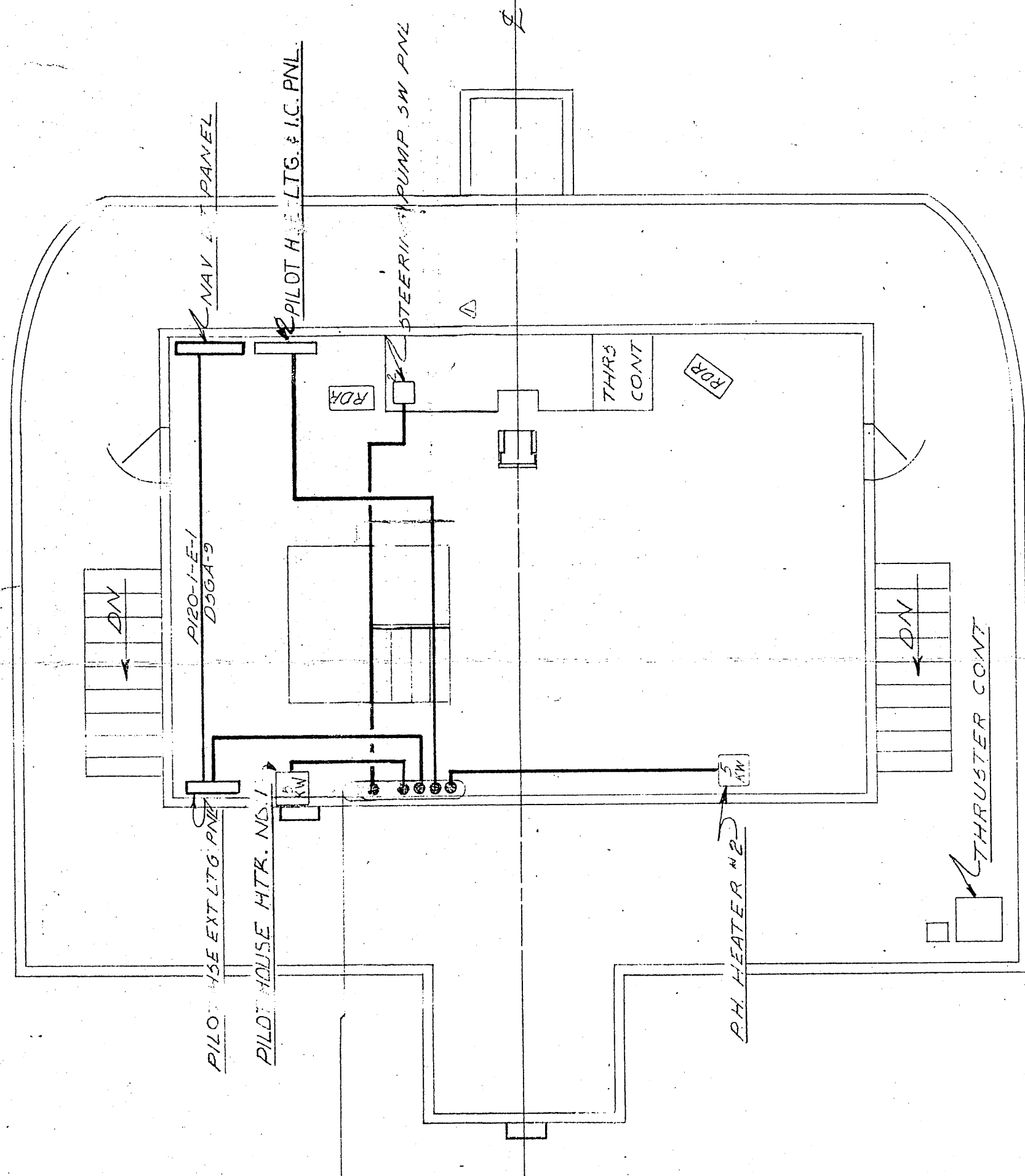
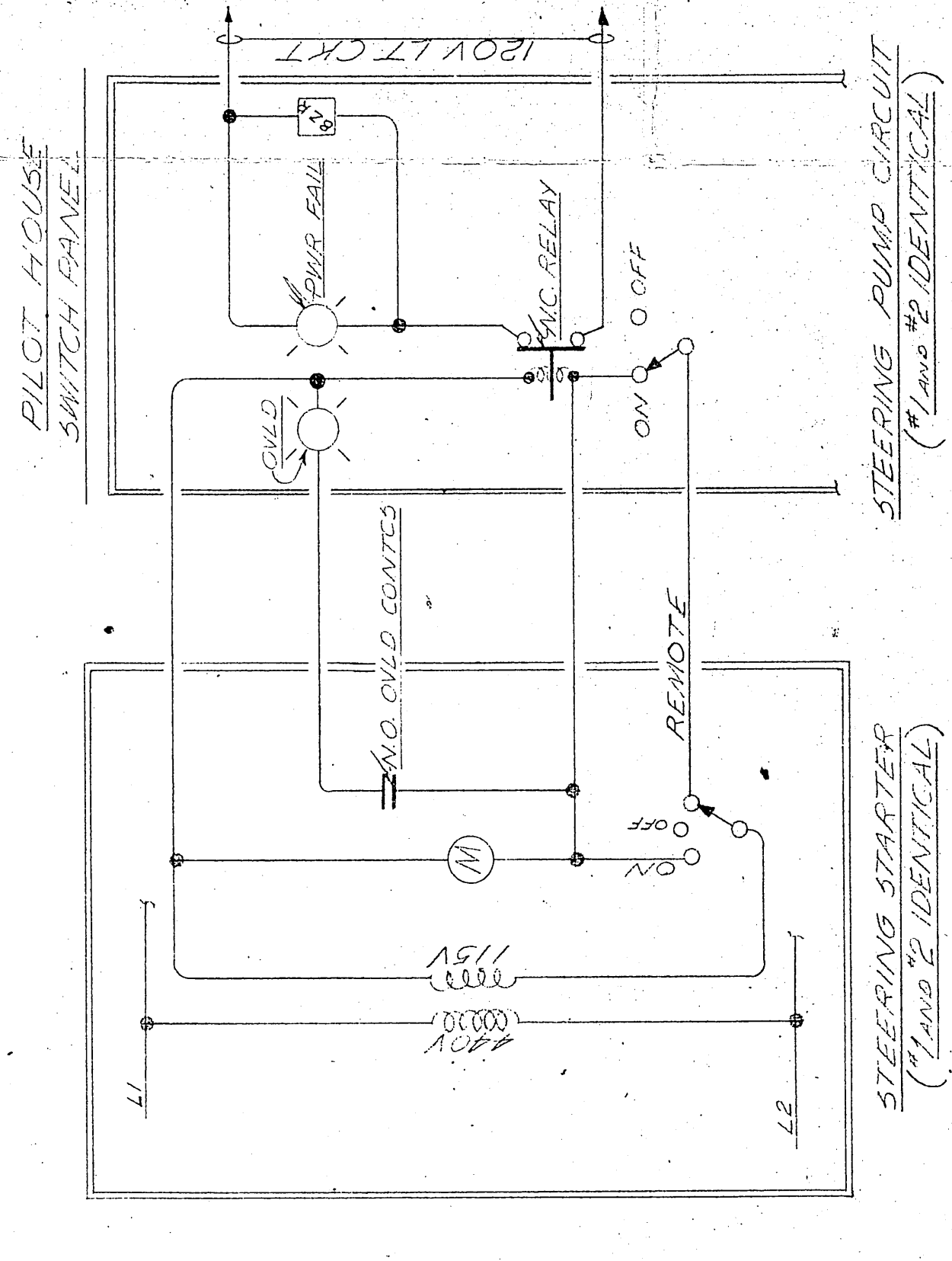


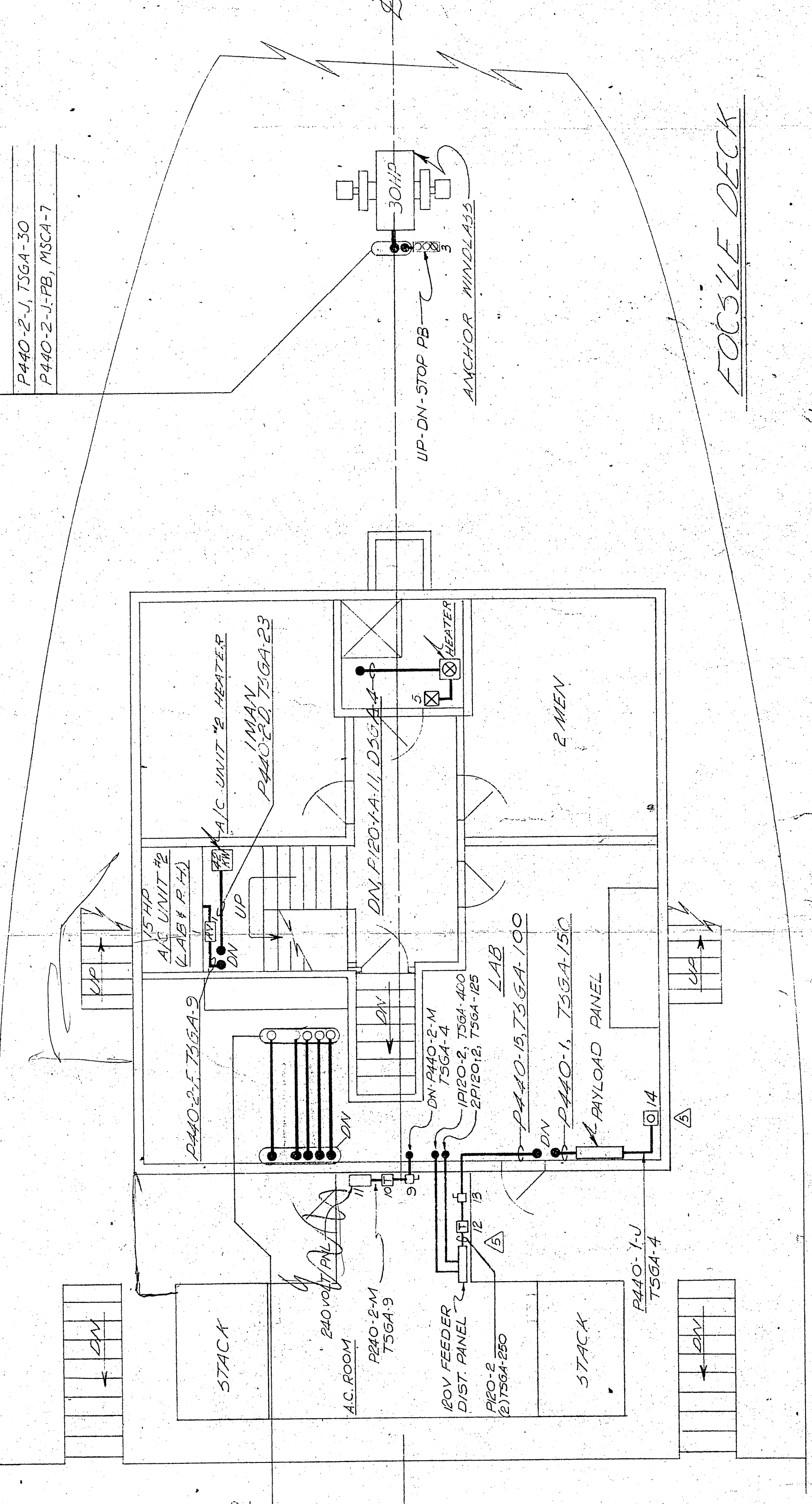
LIST OF MATERIAL

QTY	SYMBOL	DESCRIPTION	MANUFACTURE	REMARKS
1	RV	15HP REDUCED VOLTAGE STARTER 440/230, H.O.A. NEMA-12	3P D BROS 304A	AK UNIT #
1		45 PER SECTEM	FOALMAR	STEERING P.
1		UP-DN STOP PB w/circuit on stop, NEMA-4	ITE H21816L4	ANCHOR WINDLASS
1		SWITCH, DIST. INT BRASS	PAUL UHMY 862	
1		DISC SW, 440V, 3P, 50A, NON-FUSIBLE, NEMA-12	50 D HUSG14	
1		XPMP, 9KV, 60/120V, 3P	50 D 977BF	
1		DISC PANEL, 60V, 1/2 A.C. 3P, 1/2 AMP MAINS, 1/2 AMP DISPAC, 1/2 AMP 1/2 AMP 1/2 AMP 3/2 AMP 3/2 AMP AND 2 EACH 1/2 AMP 3/2 AMP 3/2 AMP 3/2 AMP	ITE TYPE EQ	
1		XPMP, 112.5KV, 3P, 3M, 460/120V	JEFFERSON ELECTRIC	
1		DISC SW, 480V, 3P, 200A, NON-FUSIBLE	50 D HUSG44A	
1		CKT BRK-RCT COMBINATION, 440V, 3P, 15A	PAULUHN CAT NO 2470	W/PLUG CAT NO 451-1



- CABLES DN PORT TO STBD
- STRNG PUMP PNL MSCA-14
  - PROP CONT P.B. F3GA-4
  - P100-1E, T3GA-30
  - P100-1B, T3GA-23
  - P440-2-A, T3GA-4
  - P440-F-C, T3GA-4

- CABLES DN PORT TO STBD
- P440-2-I, T3GA-30
  - P440-2-J-PB, MSCA-7



- CABLES UP PORT TO STBD
- STRNG PUMP PNL MSCA-14
  - PROP CONT P.B. F3GA-4
  - P100-1E, T3GA-30
  - P100-1B, T3GA-23
  - P440-2-A, T3GA-4
  - P440-F-C, T3GA-4

NO.	DATE	REVISIONS	DESCRIPTION
1	11/15/42		REVISED TO SUIT '45 BUILT' CONDITION
2	11/15/42		ADDED PC NO. 14
3	11/15/42		REVISED PC NO. 9
4	11/15/42		RELOCATED PC NOS. 12, 13, AND 18V FEEDER
5	11/15/42		DIST. PANEL TO FOC SLE DK.
6	11/15/42		RELOCATED PC NOS. 14 & 18 TO LOWER DK
7	11/15/42		DELETED PC NO. 6
8	11/15/42		ADDED PC NOS. 9, 10, & 11
9	11/15/42		ADDED PC NOS. 7, 8.
10	11/15/42		ADDED ANCHOR WINDLASS CONTROL AT WINDLASS
11	11/15/42		DELETED ANCHOR WINDLASS CONTROL IN PILOT HOUSE

APPROVALS

USCG

USPHS

**OFFICE COPY**

U.S. NAVAL SHIP SYSTEMS COMMAND  
WASHINGTON D.C. 20380

OCEANOGRAPHIC RESEARCH SHIP  
AGOR (UTILITY) CLASS

HALTER MARINE SERVICES, INC.  
P.O. BOX 29266 NEW ORLEANS, LA. 70129

POWER PLAN  
FOCSLE DECK PILOT HSE

SCALE: 1/4" = 1'-0"

DRAWN BY: EDS: JMT

DATE: OCT 23, 1972

CHK'D BY: MRS

HALTER: 3751976

JOB NO. 1874285

HALTER: 2852

NAVSHIPS NO. 180A-308-001

REV. 14

00009